



Waikite Valley School

Developing Learners for Life

1090 Waikite Valley Road, RD 1, Rotorua 3077 Tel 07 3331888
www.waikitevalley.school.nz office@waikitevalley.school.nz

Weekly Panui – Monday 16 October 2017

CELEBRATION OF OUR SCHOOL VALUES

As we enter the last term of 2017, I thought it was a good chance to revisit the focus for this year: School Values and Imagining our dreams becoming reality.

Our school charter is founded on the belief that we are:

- ★ Proud
- ★ Enthusiastic
- ★ Respectful
- ★ Caring
- ★ Confident
- ★ Curious



We have also included "Dream" as a guiding idea for the 2017 school year.

I have a dream.....

Over the past 3 terms we have encouraged our students to be Dreamers! We will continue to consider how when we envision a better future we engage in the exercise of creating hope. Our children should be supported in talking about and writing down their hopes for the future. Dreams are the first step in creating opportunities and plans that allow us to imagine what could be. They give us hope and guide us on our path. Without them we run the risk of limiting what is possible by only thinking about our current reality. Our ancestors dreamed of the impossible and then worked tirelessly to make it possible. Our dreams create our hopes for the future. What is your dream for tomorrow?

Teresa Topp

Principal

Waikite Valley School—Developing Learners for Life

principal@waikitevalley.school.nz

Ph: 027 634 4744 / 333 1888

A huge thanks to all those who have and will help with the preparation of Pet Day.



Tuesday 17 October

WVS Crafty Day - students to bring bits and bobs for their creations.

Wednesday 18 October

WVS Pet Day - judging starts at 10.30am.

Friday 20 October

Group day - for 1st & 2nd placegetters in all Lamb/Calf rings from Pet Day, or the Open Ring for Kids and those not placed.

Monday 23 October

Labour Day

Friday 27 October

Dress up Diabolically for Diabetes Day - Gold Coin donation for Rotorua Diabetes.



A six-week swim training programme is being offered at the Aquatic Centre for aspiring young triathletes taking on this year's Sanitarium Weet-Bix Kids TRYathlon.

The training is a collaboration between Swim Rotorua, Rotorua Association of Triathlon and Multisport Inc. (RATS) and Rotorua Lakes Council.

First session is on Sunday 29 October from 9am. Cost is \$30 per person. Sessions include – technique, transition, bike skills and putting it all together before event day.

Meet and learn from one of the world's best Xterra athletes Sam Osbourne.

For more information, contact the swim school on 07 351 7621 or email lakesswim@rotorualc.nz



"Developing learners for life"

Waikite Valley School



It is school Pet Day this Wednesday (18th October). **TOMORROW** (Tuesday 17th October) we will craft all of our creations for the pet day craft competitions (details were sent home before the holidays). After school on Tuesday the crafts will be judged with results displayed in the School Library on Wednesday 18th October (after 10am).

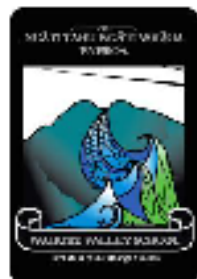
The judging of animals commences at 10.30am. It is a compulsory school day, those without pets will be expected in class at 9am for roll call. The school bus will be functioning as usual.

Upper Atiamuri will be hosting the Group Day this year, which will be held on Friday 20th October. For the past couple of years we have had a fairly poor turnout from our school and we would really love to have a bigger, stronger group competing this year. This is a real showcase for our rural schools and it is great to be a part of if you have qualified at our school event. We have purchased 20 Show Stopper calf & lamb jackets in our school colours to be used for our representatives on the day—these will be distributed on Thursday to those who let the office know that they will be attending.



THERE'S A SUNFLOWER IN MY SUPPER!





Waikite Valley School

PET DAY CREATIONS 2017

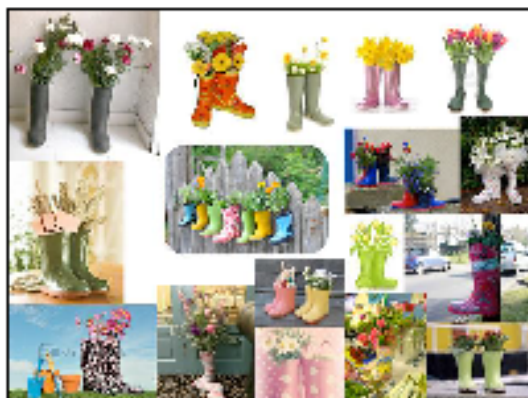
Outlined are the success criteria for fairness to all students and to allow judges clearer guidelines for marking. It is **compulsory for them to enter at least one** of the categories. They construct the creations on Tuesday 17th October during class time, please send their bits and pieces along with them. The teachers will set up 'construction' stations where they will independently work on their creations. All work will be displayed in the school library in their appropriate categories.

All students may enter any or all of the following categories.

- Playdough animals
- Flower globe
- Gumboot Floral Creation

The age groups are:

Junior school (yrs 0 – 2)
Middle school (yrs 3 – 4)
Senior school (yrs 5 – 6)
Intermediate Students (yrs 7-8)



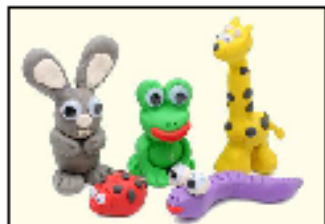
Playdough Animals:

One animal created using playdough (you are allowed to use googly eyes or other 'enhancements' but the main component must be playdough. We are looking for a true likeness in shape and proportion, but not necessarily colour. If you would like to make some playdough at home this recipe is easy:

Non cooked Playdough

- 1 cup boiling water
- ½ cup salt
- 1 Tbsp food colouring
- 2 Tbsp cream of tartar
- 1 Tbsp of oil

Mix together and add 1 cup of flour. Mix and knead. If you have no cream of tartar, add ½ a cup of salt.



Flower Globe:

A flower displayed in a jar filled with water. You can add any appropriate decorations, glitter, food colouring etc. The flower should be attached to the jar lid with plasticine. These will be judged on balance, use of colour, beauty and overall appeal.

Gumboot Floral Creation:

Children can bring in either an old single gumboot or a pair and use any flowers or leafy stalks to create an arrangement. They will be judged on height, use of colour and overall impact.

Please note:

- The creations will be made at school on Tuesday 17 October and judged that afternoon so results are available on Pet Day (Wednesday 18th October).
- Any extras to add to the creation can be made or gathered during the school holidays. The children are required to independently construct their creations on the Tuesday at school.
- Students will need to supply their own flowers, playdough and anything necessary for their craft.
- The above descriptions are the criteria that will be given to judges.
- All creations must be labelled underneath with the child's name and year level.

We will have judges from the local Woman's Institute, so get planning and show them what a creative and talented school we have. HAVE FUN!!

